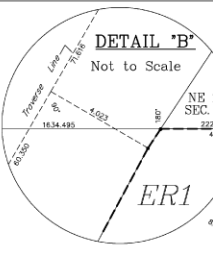
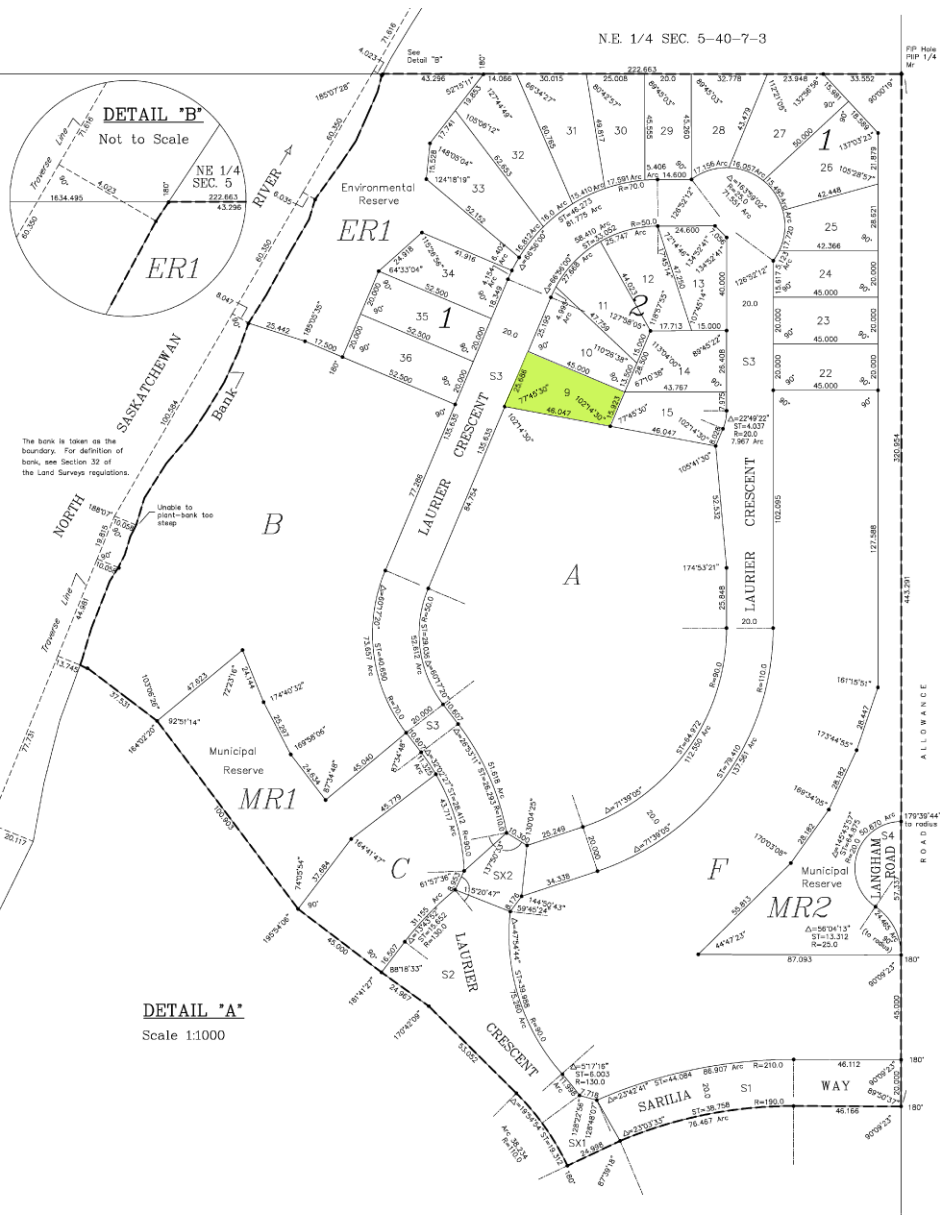


N.E. 1/4 SEC. 5-40-7-3

FP How
RIP 1/4
M



The bank is taken as the boundary. For definition of bank, see Section 32 of the Land Surveys regulations.

Undo to point-bank too steep

DETAIL 'A'
Scale 1:1000

ROAD ALLOWANCE
40.32M

LAURIER ROAD
179°39'44" to road

180°
180°
90°59'57"

PLAN OF SURVEY SHOWING
 SURFACE SUBDIVISION OF PART OF
 S.E. 1/4 Section 5
 Twp. 40, Rge. 7, W 3rd Mer.
 SASKATCHEWAN
 BY T.R. WEBB, S.L.S.
 JUNE-AUGUST 2006
 SCALE 1:5000

1. Dimensions shown are in metres and three decimals thereof.
2. Area to be approved is outlined with a heavy dashed line.
3. The unique identifier of S220 for this survey firm has been stamped on all established standard iron posts.
4. Standard iron posts found are shown thus unless otherwise indicated.
5. Standard iron posts planted are shown thus.
6. Lot corners not marked with Standard Iron Posts are marked with 0.013 # x 0.450 iron posts.
7. Parcels within the line of approval have an Extension 0.

Title to the dedicated lands shown on this plan is to issue to:
 RR of Lord No. 404
 Doc 160
 Wadena, SK S0K 6R0

